

RC-V100 DEMONSTRATION Manual Ver0.9 2 May2014

Ensure camera has the correct firmware version.

XF205: Already Compatible

XF300/XF305 TBC

C300/C300PL: 1.1.2.1.00

C100:TBC

C500/C500PL:TBC

Ensure camera remote control option is changed from "Standard" to "RC-V100"

Recommend adjust settings to Beep Off (B-7) Focus Sensitivity Low (A-8) on customisation panel at base of controller. Ensure controller disconnected before making adjustments

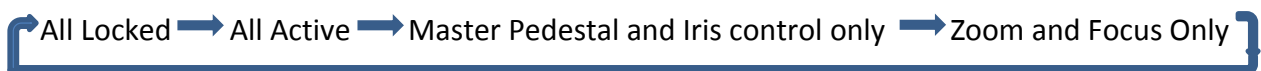
With camera OFF, connect lead to RCU and camera connector

Ensure camera is switched to MANUAL. Switch off AF/AI/ AWB/Full Auto

Select AF/MF (depending on model).

Turn on camera. RCU also powers-up.

Press ACTIVE button on controller. On power-up All controls locked. Sequence is:



Show control of: Zoom, Focus, Iris

Operate ND Filter (C300/C500)

Access menu via controller

Demonstrate operation of Gain (and ISO if appropriate), shutter WB

Activate Custom Picture Setting

Activate WFM on camera

Show WB R Gain effect/B Gain effect

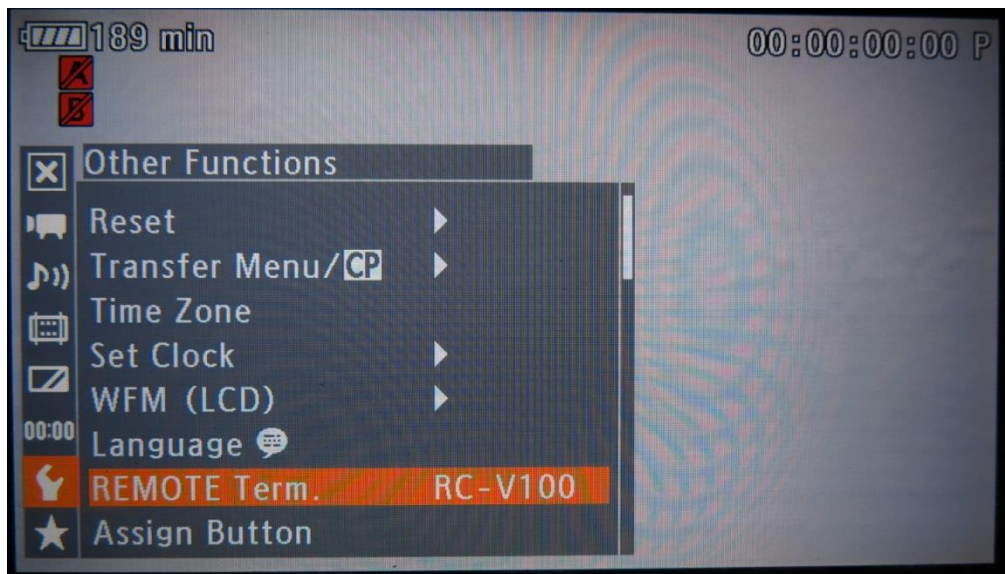
Show Master Black Red & Master Black Blue adjustment effect.

Cover lens. Operate Master Pedestal. Show effect on Black reproduction.

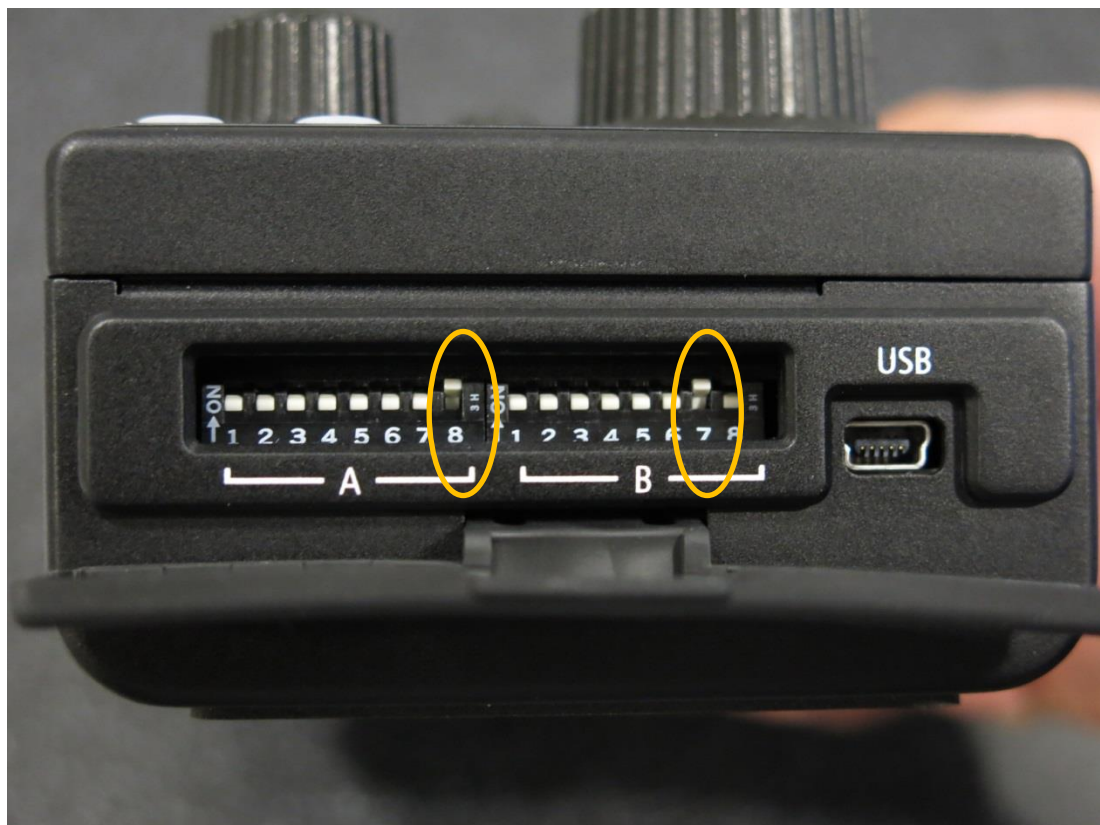
Assignable Function Button: Replicate assigned buttons 1 – 4 on camera

With photo *C300 based, XF305 partial

Ensure camera remote control option is changed from "Standard" to "RC-V100"



Recommend adjust settings to Beep Off (B-7) Focus Sensitivity Low (A-8) on customisation



panel at base of controller. Ensure controller disconnected before making adjustments

With camera OFF, connect lead to RCU and camera connector

Ensure camera is switched to MANUAL. Switch off AF/AI/ AWB/Full Auto

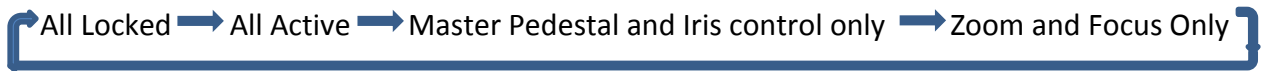
Select AF/MF (depending on model). EF lens should set as AF



Turn on camera. RCU also powers-up.

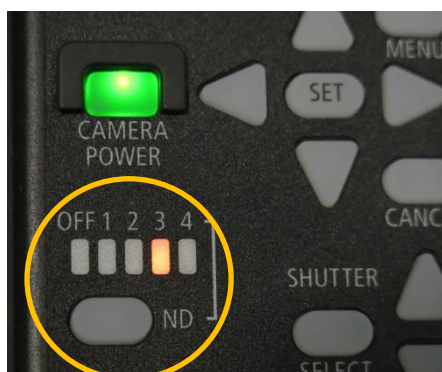


Press ACTIVE button on controller. On power-up All controls locked. Sequence is:



Show control of: Zoom, Focus, Iris

Operate ND Filter (C300/C500)



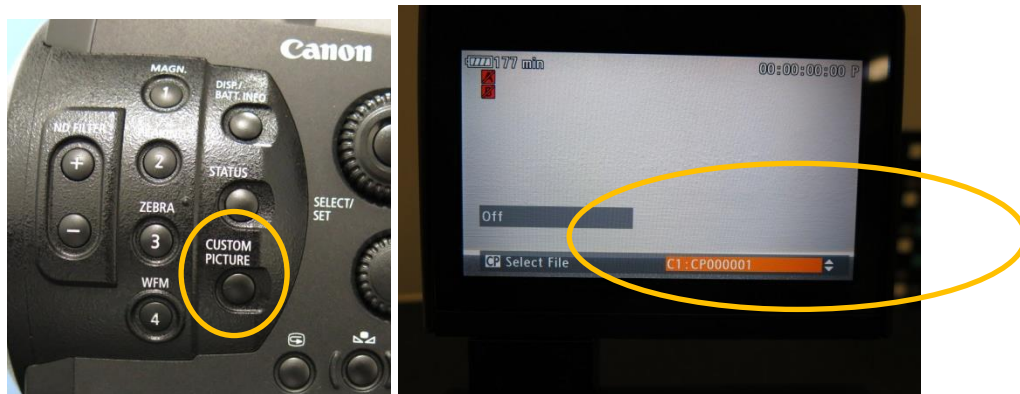
Access menu via controller



Demonstrate operation of Gain (and ISO if appropriate), shutter WB



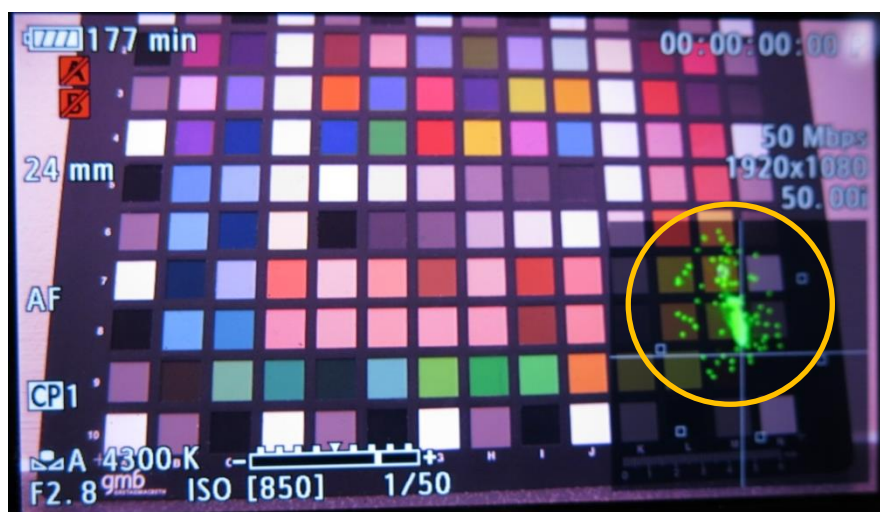
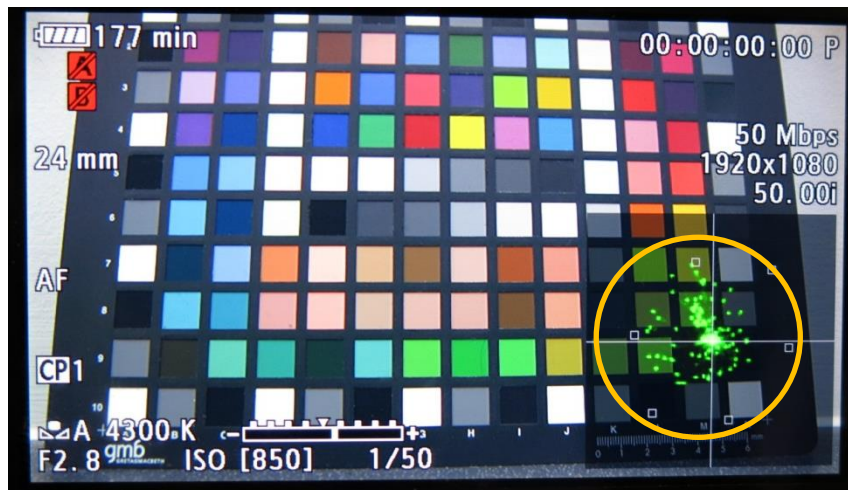
Activate Custom Picture Setting

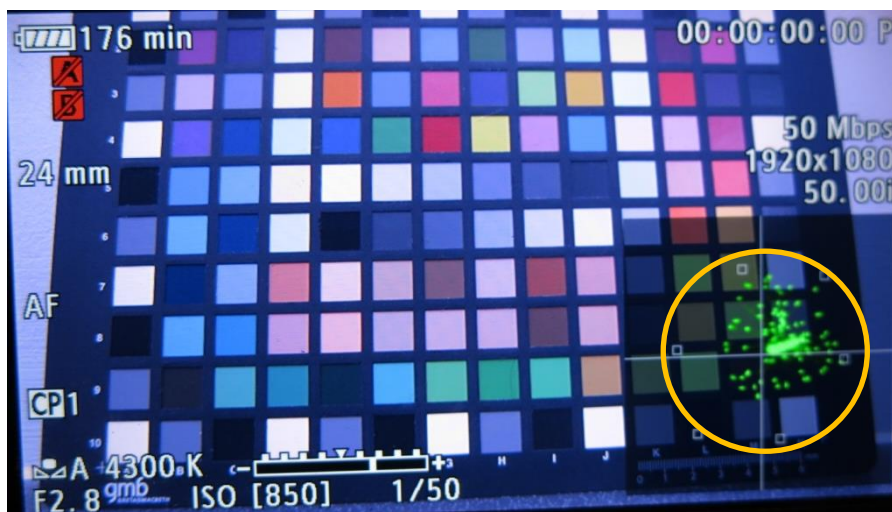
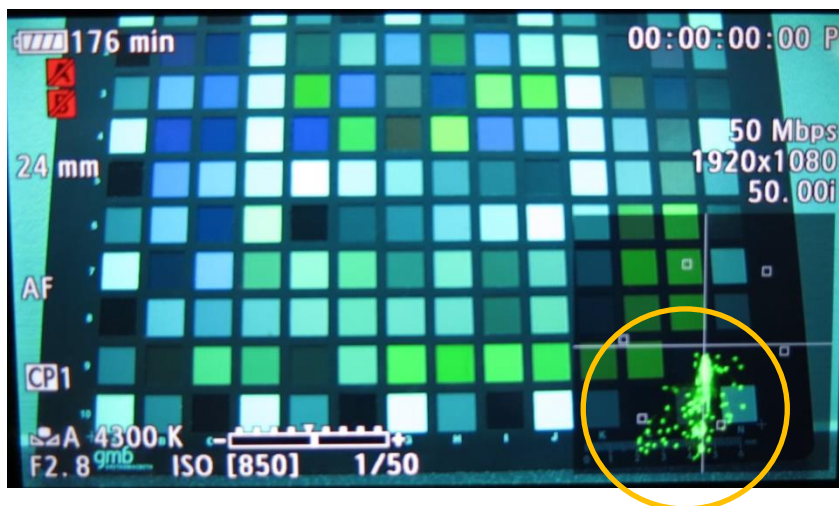


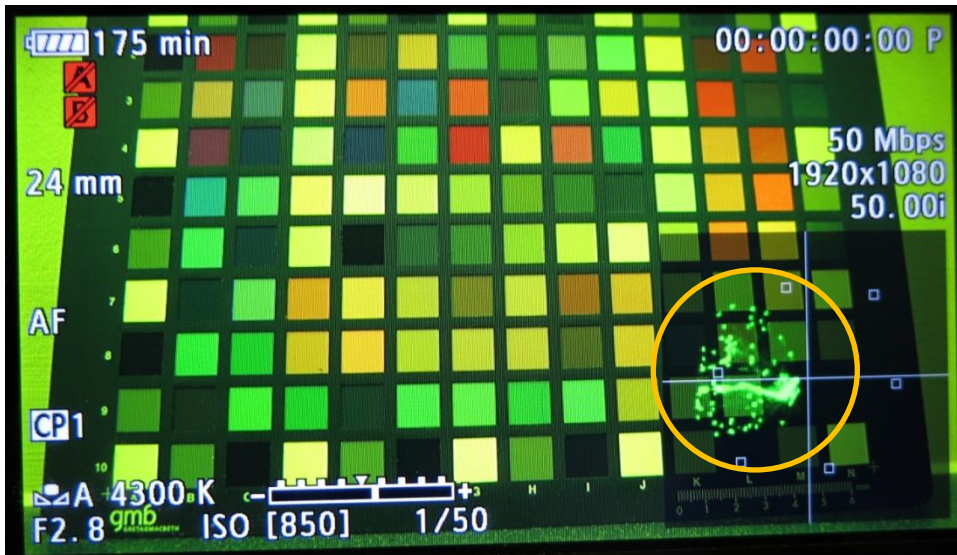
Activate WFM on camera



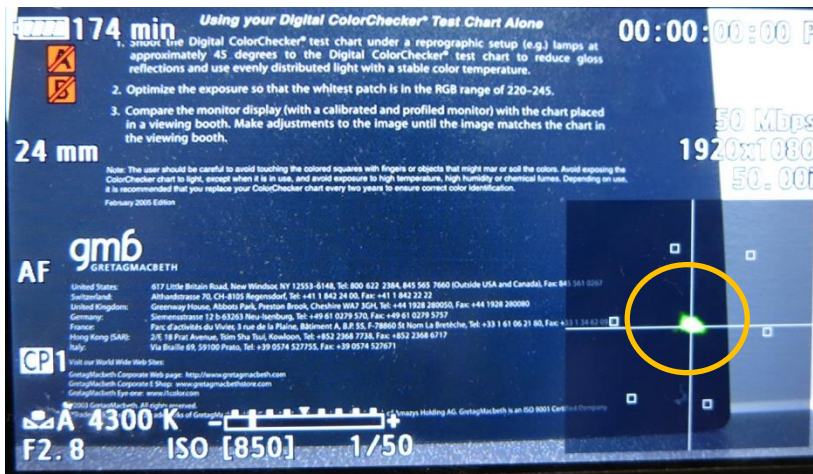
Show WB R Gain effect/B Gain effect



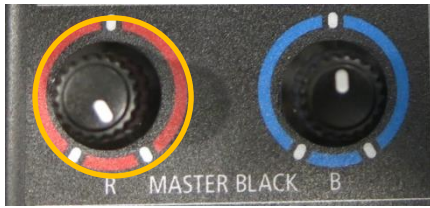




Show Master Black Red & Master Black Blue adjustment effect.



black and White chart



174 min *Using your Digital ColorChecker® Test Chart Alone* **00:00:00:00 P**

1. Mount the Digital ColorChecker® test chart under a reprographic setup (e.g.) lamps at approximately 45 degrees to the Digital ColorChecker® test chart to reduce gloss reflections and use evenly distributed light with a stable color temperature.
2. Optimize the exposure so that the whitest patch is in the RGB range of 220-245.
3. Compare the monitor display (with a calibrated and profiled monitor) with the chart placed in a viewing booth. Make adjustments to the image until the image matches the chart in the viewing booth.

24 mm **50 Mbps**
1920x1080
50.00i

Note: The user should be careful to avoid touching the colored squares with fingers or objects that might mar or soil the colors. Avoid exposing the ColorChecker chart to light, except when it is in use, and avoid exposure to high temperature, high humidity or chemical fumes. Depending on use, it is recommended that you replace your ColorChecker chart every two years to ensure correct color identification.
February 2005 Edition

AF **gmb6**
GRETAGMACBETH

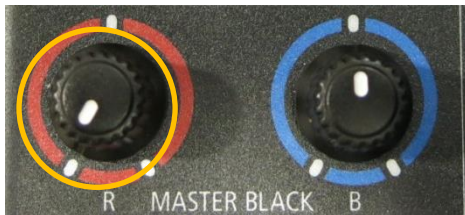
United States: 617 Little Britain Road, New Windsor, NY 12553-6148, Tel: 800 622 2384, 845 565 7660 (Outside USA and Canada), Fax: 845 561 0267
Switzerland: Althardstrasse 70, CH-8105 Regensdorf, Tel: +41 1 842 24 00, Fax: +41 1 842 22 22
United Kingdom: Greenway House, Abbots Park, Preston Brook, Cheshire WA7 3GH, Tel: +44 1928 280050, Fax: +44 1928 280080
Germany: Siemensstrasse 12 b 63263 Neu-Isenburg, Tel: +49 61 0279 570, Fax: +49 61 0279 5757
France: Parc d'activités du Vivier, 3 rue de la Plaine, Bâtiment A, B.P. 55, F-78860 St Nom La Breche, Tel: +33 1 61 06 21 80, Fax: +33 1 34 62 01 01
Hong Kong (SAR): 2/F, 18 First Avenue, Tsim Sha Tsui, Kowloon, Tel: +852 2368 7738, Fax: +852 2368 6717
Italy: Via Braille 69, 59100 Prato, Tel: +39 0574 527755, Fax: +39 0574 527671

Visit our World Wide Web Sites:
GretagMacbeth Corporate Web page: <http://www.gretagmacbeth.com>
GretagMacbeth Corporate E Shop: www.gretagmacbethstore.com
GretagMacbeth Eye-on: www.1color.com

©2003 GretagMacbeth. All rights reserved.
GretagMacbeth is a brand name of GretagMacbeth AG. GretagMacbeth is an ISO 9001 Certified Company.

CP1 **A 4300 K** **ISO [850]** **1/50**

F2.8



173 min *Using your Digital ColorChecker® Test Chart Alone* **00:00:00:00 P**

1. Mount the Digital ColorChecker® test chart under a reprographic setup (e.g.) lamps at approximately 45 degrees to the Digital ColorChecker® test chart to reduce gloss reflections and use evenly distributed light with a stable color temperature.
2. Optimize the exposure so that the whitest patch is in the RGB range of 220-245.
3. Compare the monitor display (with a calibrated and profiled monitor) with the chart placed in a viewing booth. Make adjustments to the image until the image matches the chart in the viewing booth.

24 mm **50 Mbps**
1920x1080
50.00i

Note: The user should be careful to avoid touching the colored squares with fingers or objects that might mar or soil the colors. Avoid exposing the ColorChecker chart to light, except when it is in use, and avoid exposure to high temperature, high humidity or chemical fumes. Depending on use, it is recommended that you replace your ColorChecker chart every two years to ensure correct color identification.
February 2005 Edition

AF **gmb6**
GRETAGMACBETH

United States: 617 Little Britain Road, New Windsor, NY 12553-6148, Tel: 800 622 2384, 845 565 7660 (Outside USA and Canada), Fax: 845 561 0267
Switzerland: Althardstrasse 70, CH-8105 Regensdorf, Tel: +41 1 842 24 00, Fax: +41 1 842 22 22
United Kingdom: Greenway House, Abbots Park, Preston Brook, Cheshire WA7 3GH, Tel: +44 1928 280050, Fax: +44 1928 280080
Germany: Siemensstrasse 12 b 63263 Neu-Isenburg, Tel: +49 61 0279 570, Fax: +49 61 0279 5757
France: Parc d'activités du Vivier, 3 rue de la Plaine, Bâtiment A, B.P. 55, F-78860 St Nom La Breche, Tel: +33 1 61 06 21 80, Fax: +33 1 34 62 01 01
Hong Kong (SAR): 2/F, 18 First Avenue, Tsim Sha Tsui, Kowloon, Tel: +852 2368 7738, Fax: +852 2368 6717
Italy: Via Braille 69, 59100 Prato, Tel: +39 0574 527755, Fax: +39 0574 527671

Visit our World Wide Web Sites:
GretagMacbeth Corporate Web page: <http://www.gretagmacbeth.com>
GretagMacbeth Corporate E Shop: www.gretagmacbethstore.com
GretagMacbeth Eye-on: www.1color.com

©2003 GretagMacbeth. All rights reserved.
GretagMacbeth is a brand name of GretagMacbeth AG. GretagMacbeth is an ISO 9001 Certified Company.

CP1 **A 4300 K** **ISO [850]** **1/50**

F2.8



173 min **Using your Digital ColorChecker® Test Chart Alone** **00:00:00:00 P**

1. Shoot the Digital ColorChecker® test chart under a reprographic setup (e.g.) lamps at approximately 45 degrees to the Digital ColorChecker® test chart to reduce gloss reflections and use evenly distributed light with a stable color temperature.
2. Optimize the exposure so that the whitest patch is in the RGB range of 220-245.
3. Compare the monitor display (with a calibrated and profiled monitor) with the chart placed in a viewing booth. Make adjustments to the image until the image matches the chart in the viewing booth.

24 mm **50 Mbps** **1920x1080** **50.00i**

Note: The user should be careful to avoid touching the colored squares with fingers or objects that might mar or soil the colors. Avoid exposing the ColorChecker chart to light, except when it is in use, and avoid exposure to high temperature, high humidity or chemical fumes. Depending on use, it is recommended that you replace your ColorChecker chart every two years to ensure correct color identification.

February 2005 Edition

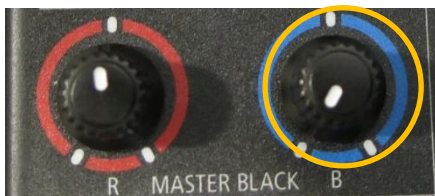
AF gmb6 GRETAGMACBETH

United States: 617 Little Britain Road, New Windsor NY 12553-6148, Tel: 800 622 2384, 845 565 7660 (Outside USA and Canada), Fax: 845 561 0267
 Switzerland: Althardstrasse 70, CH-8105 Regensdorf, Tel: +41 1 842 24 00, Fax: +41 1 842 22 22
 United Kingdom: Greenway House, Abbots Park, Preston Brook, Cheshire WA7 3GH, Tel: +44 1928 280050, Fax: +44 1928 280080
 Germany: Siemensstrasse 12 b 63263 Neu-Isenburg, Tel: +49 61 0279 570, Fax: +49 61 0279 5757
 France: Parc d'activités du Vivier, 3 rue de la Plaine, Bâtiment A, B.P. 55, F-78860 St Nom La Breteche, Tel: +33 1 61 06 21 80, Fax: +33 1 34 62 09 13
 Hong Kong (SAR): 2/F 18 Prat Avenue, Tsim Sha Tsui, Kowloon, Tel: +852 2368 7738, Fax: +852 2368 6717
 Italy: Via Braille 69, 59100 Prato, Tel: +39 0574 527755, Fax: +39 0574 527671

CP1 Visit our World Wide Web Sites:
 GretagMacbeth Corporate Web page: <http://www.gretagmacbeth.com>
 GretagMacbeth Corporate E Shop: www.gretagmacbethstore.com
 GretagMacbeth Eye-one: www.i1color.com

© 2003 GretagMacbeth. All rights reserved.
 Trademark of GretagMacbeth. GretagMacbeth is an ISO 9001 Certified Company.

A 4300 K **F2.8** **ISO [850]** **1/50**



173 min **Using your Digital ColorChecker® Test Chart Alone** **00:00:00:00 P**

1. Shoot the Digital ColorChecker® test chart under a reprographic setup (e.g.) lamps at approximately 45 degrees to the Digital ColorChecker® test chart to reduce gloss reflections and use evenly distributed light with a stable color temperature.
2. Optimize the exposure so that the whitest patch is in the RGB range of 220-245.
3. Compare the monitor display (with a calibrated and profiled monitor) with the chart placed in a viewing booth. Make adjustments to the image until the image matches the chart in the viewing booth.

24 mm **50 Mbps** **1920x1080** **50.00i**

Note: The user should be careful to avoid touching the colored squares with fingers or objects that might mar or soil the colors. Avoid exposing the ColorChecker chart to light, except when it is in use, and avoid exposure to high temperature, high humidity or chemical fumes. Depending on use, it is recommended that you replace your ColorChecker chart every two years to ensure correct color identification.

February 2005 Edition

AF gmb6 GRETAGMACBETH

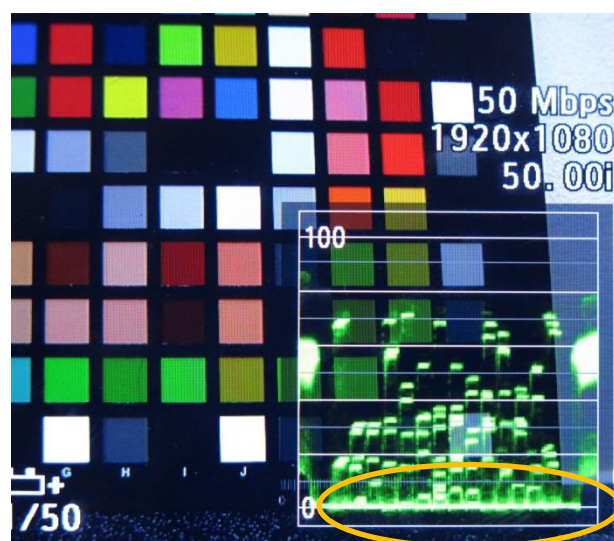
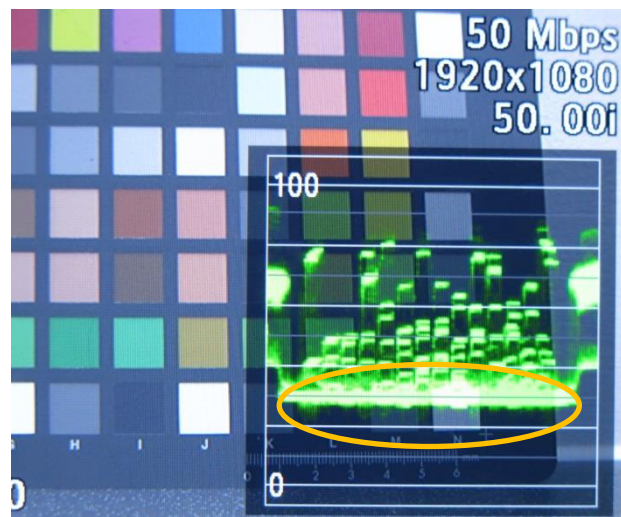
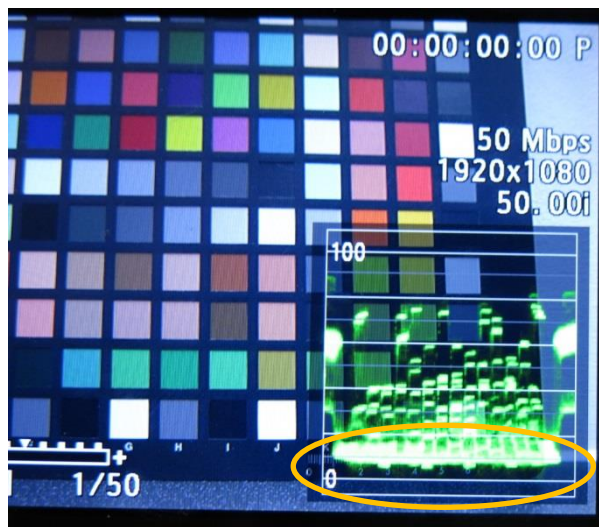
United States: 617 Little Britain Road, New Windsor NY 12553-6148, Tel: 800 622 2384, 845 565 7660 (Outside USA and Canada), Fax: 845 561 0267
 Switzerland: Althardstrasse 70, CH-8105 Regensdorf, Tel: +41 1 842 24 00, Fax: +41 1 842 22 22
 United Kingdom: Greenway House, Abbots Park, Preston Brook, Cheshire WA7 3GH, Tel: +44 1928 280050, Fax: +44 1928 280080
 Germany: Siemensstrasse 12 b 63263 Neu-Isenburg, Tel: +49 61 0279 570, Fax: +49 61 0279 5757
 France: Parc d'activités du Vivier, 3 rue de la Plaine, Bâtiment A, B.P. 55, F-78860 St Nom La Breteche, Tel: +33 1 61 06 21 80, Fax: +33 1 34 62 09 13
 Hong Kong (SAR): 2/F 18 Prat Avenue, Tsim Sha Tsui, Kowloon, Tel: +852 2368 7738, Fax: +852 2368 6717
 Italy: Via Braille 69, 59100 Prato, Tel: +39 0574 527755, Fax: +39 0574 527671

CP1 Visit our World Wide Web Sites:
 GretagMacbeth Corporate Web page: <http://www.gretagmacbeth.com>
 GretagMacbeth Corporate E Shop: www.gretagmacbethstore.com
 GretagMacbeth Eye-one: www.i1color.com

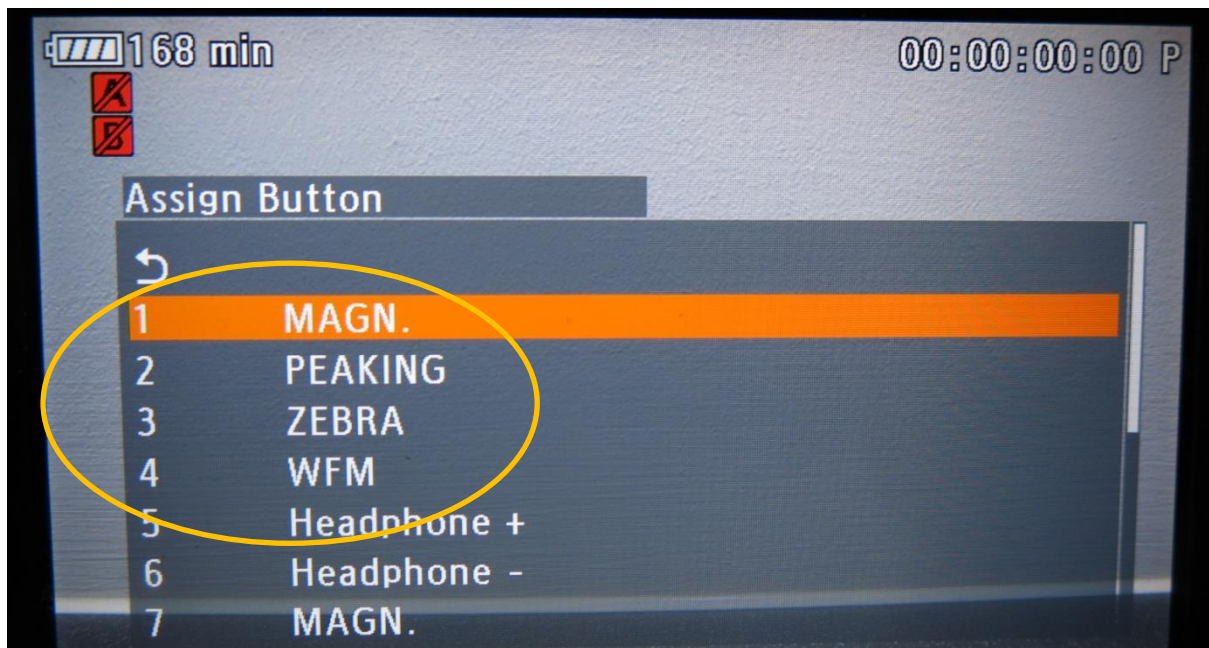
© 2003 GretagMacbeth. All rights reserved.
 Trademark of GretagMacbeth. GretagMacbeth is an ISO 9001 Certified Company.

A 4300 K **F2.8** **ISO [850]** **1/50**

Operate Master Pedestal. Show effect on Black reproduction.



Assignable Function Button: Replicate assigned buttons 1 – 4 on camera



Good Luck!

By Paul Atkinson, Satoko Yokoi and Satake